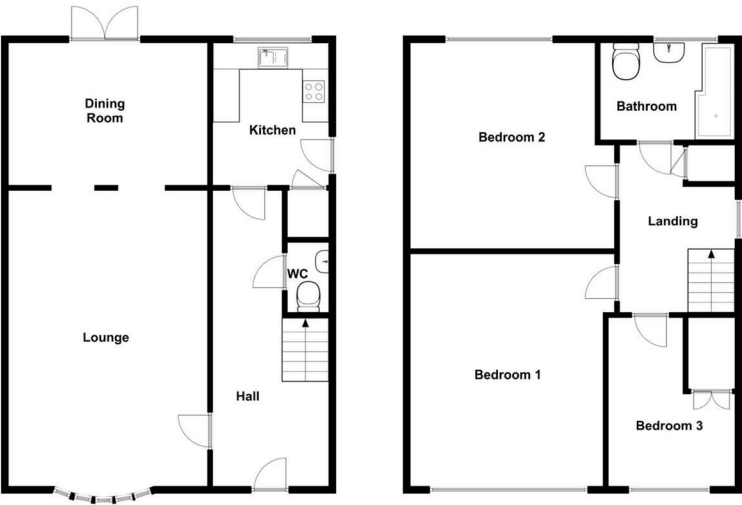


3 CHURCH FIELD ROAD, COLCHESTER CO6

£1,500 PER MONTH

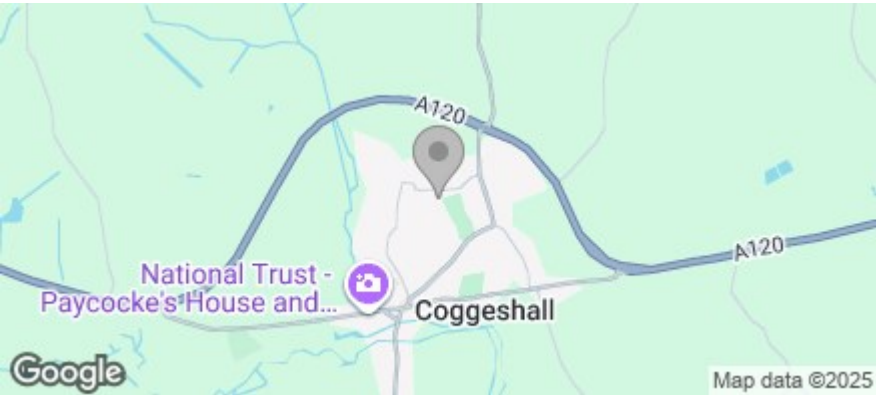
3 Bedrooms | 1 Bathrooms | 2 Receptions

Floor Plan



© Essex EPCs
This floor plan is not to scale and is for illustrative purposes only.
We make no guarantee, warranty or representation as to its accuracy and completeness.

Area Map



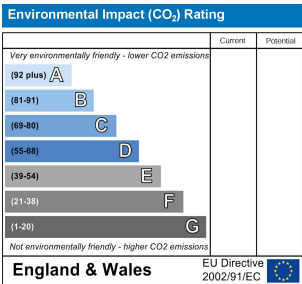
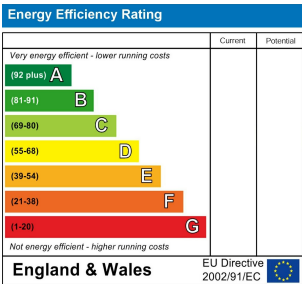
Accommodation

- DETACHED FAMILY HOME
- THREE BEDROOMS
- DESIRABLE LOCATION
- GARAGE AND DRIVEWAY
- WALKING DISTANCE TO HONYWOOD SCHOOL
- GENEROUS GARDEN
- DOWNSTAIRS CLOACKROOM
- TWO RECEPTION ROOMS
- EASY ACCESS TO A120
- SOUGHT AFTER LOCATION

Viewing

Please contact us on 01376 386555 if you wish to arrange a viewing appointment for this property, or require further information.

Energy Efficiency Graph



Phone: 01376 386555
Email: info@branocsestates.co.uk
Website: www.branocsestates.co.uk

Phoenix House 5 New Street
Braintree
Essex
CM7 1ER

Branocs endeavour to maintain accurate depictions of properties in Virtual Tours, Floor Plans and descriptions, however, these are intended only as a guide and purchasers must satisfy themselves by personal inspection.

